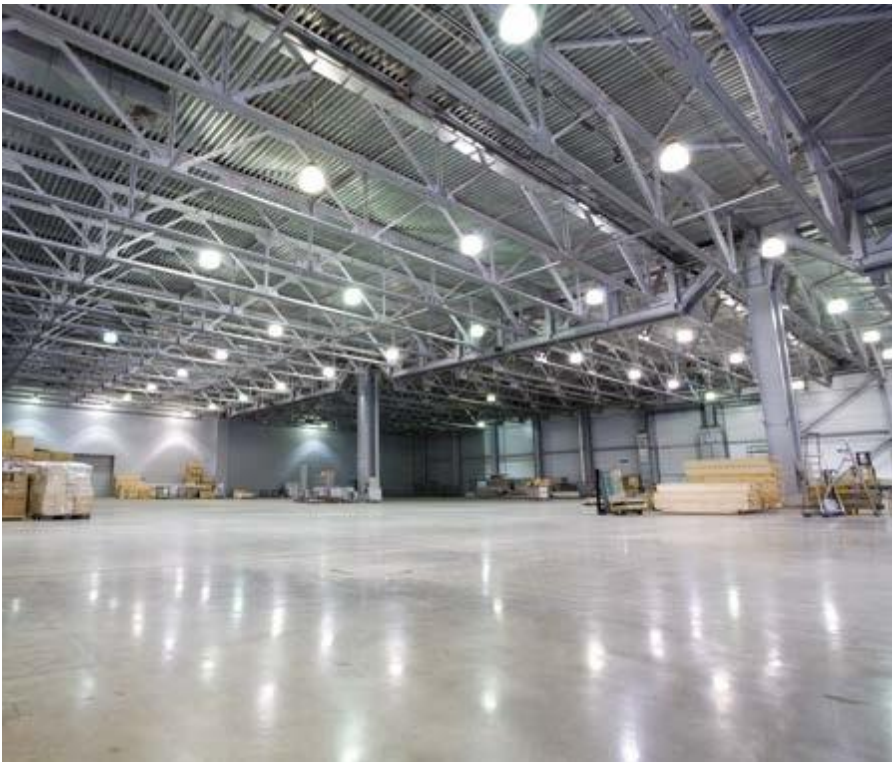




DECO CRETE

EUROPEAN CONCRETE TECHNOLOGY

POLISHED CONCRETE SOLUTIONS



PRODUCT CATALOG



ABOUT US

Deco Crete is a European - Vietnamese company specialized in polished concrete. The company uses state of the art Concrete Technology from Europe to manufacture innovative and eco-friendly products.

Deco Crete has a large customer base among leading contractors and factory owners in Vietnam and exports to Asean countries and Europe.

Deco Crete products have turned hundreds of concrete floors in factories, supermarkets, parking garages and restaurants into easy to clean, durable, sustainable and beautiful surfaces.

MANUFACTURER

Continuous striving for excellence, passion for concrete and focus on research and development makes Deco Crete an outstanding partner in the construction industry.

The latest concrete technology and the best raw materials from leading manufacturers like Dow Chemical and Silmaco enables Deco Crete to produce superior products.



THE LATEST CONCRETE TECHNOLOGY

Deco Crete products are an eco-friendly, economic and low-maintenance substitute for epoxy coatings. Deco Crete's products turn the concrete floors itself into hard wearing, stain resistant surfaces.

HIGH PERFORMANCE

- Makes concrete surfaces hard, dense and dust free.
- A single component, easy to apply & quick drying.
- Little maintenance unlike epoxy's or other coatings.
- Gives a beautiful glossy finish.
- Easy to clean, including tire marks.
- Water based, VOC free, and ECO-Friendly.
- Certified test results from SGS and TUV SUD.
- High ranking in LEED & LOTUS program.



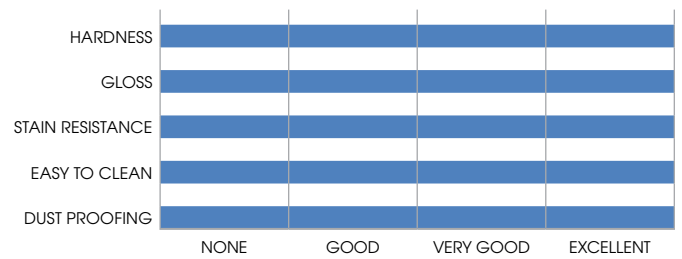
GUARDS



Guards are protective, penetrating and breathable sealers for concrete floors. They make the concrete more wear resistant and easy to clean.

DECOfinish

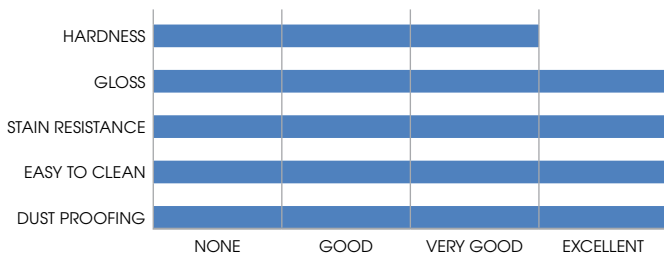
DECOfinish is a top of the line product which gives concrete a beautiful natural shine and gloss. DECOfinish contains, apart from Lithium Silicates, other reactive components which fortify the existing concrete surface and makes the surface extremely hard wearing, stain resistant, dust free and maintenance friendly. DECOfinish is designed for surfaces polished up to grit 800.



RECOMMENDED: For concrete polished up to grit #800.

DECOfinish-lp

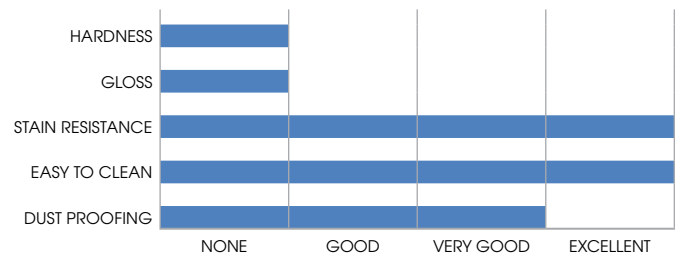
DECOfinish-lp has a higher ability to penetrate concrete than DECOfinish and is more suitable for very dense concrete and highly polished surfaces. DECOfinish-lp should be used after polished step with grit 1500 or higher.



RECOMMENDED: For very dense, highly polished concrete. Has high penetrating capacity.

DECOssp-1

DECOssp-1 is a long lasting sub-surface stain protector, which penetrates the most dense concrete surfaces. It can be used on horizontal and vertical surfaces and both interior and exterior. It also works excellent on bricks.



RECOMMENDED: For all kind of surfaces, has high penetrating capacity.

LIQUID HARDENERS

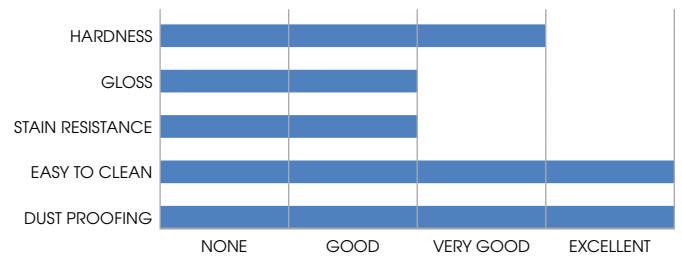


Liquid hardeners turn weak components of the concrete (Calcium Hydroxide) into a hard mineral (Calcium Silicate Hydrate) which fills the pores of concrete.

They boost the wear resistance of the floor and stop dusting of concrete.

DECOLit

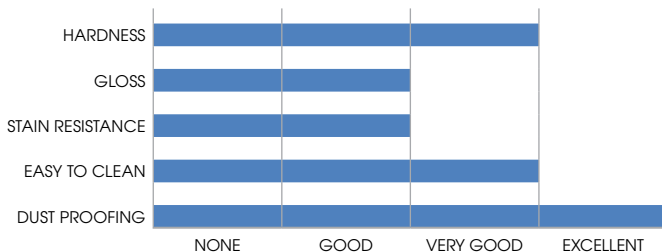
DECOLit is a Lithium Silicate solution which hardens and densifies concrete, while making it dust free, stain and wear resistant. DECOLit, is designed to penetrate the surface fast and travel deep in the concrete. DECOLit is suitable for dense, good quality concrete. It is low in alkaline and combats surface crazing due to ASR.



RECOMMENDED: Low porous, highly polished concrete. Has high penetrating capacity.

DECOsil

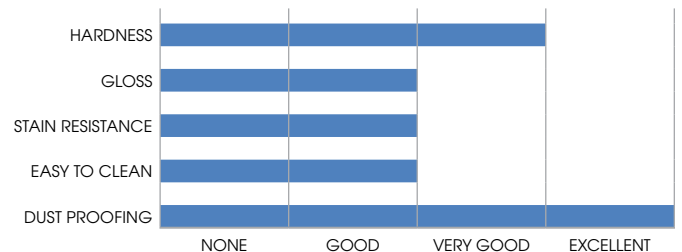
DECOsil is a hardener / densifier containing Lithium Silicates and other reactive silicates. DECOsil penetrates well, is economical to use and a perfect product to harden concrete floors and to eliminate the dusting of concrete.



RECOMMENDED: For medium quality concrete. Has good penetrating capacity.

DECOsod-hs1

DECOsod-hs1 is a hardener/ densifier containing high quality sodium silicates from Europe. It has a very high solids content and is most suitable to harden porous concrete floors.



RECOMMENDED: For porous, low quality concrete.

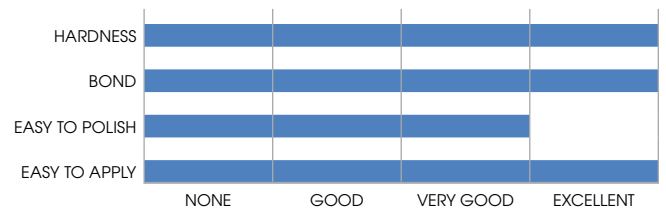
REPAIR



Repair of concrete floors can best be done before or during the polishing process. Deco Crete has a variety of concrete floor repair solutions which can match the color of the existing concrete.

DECOfix

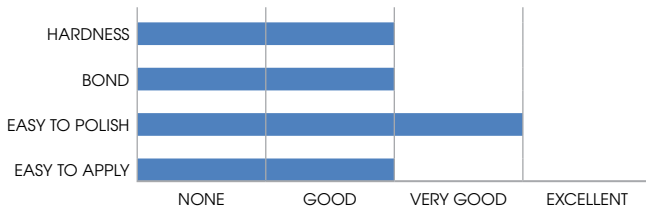
DECOfix is a two component polymer modified cementitious repair material to fix large holes and wide cracks in the concrete surface. It contains selected hard silica sand and top quality acrylic polymer and bonds very well to the existing surface.



RECOMMENDED: For all kinds of holes and cracks. Applied before polishing process.

DECOpinfix

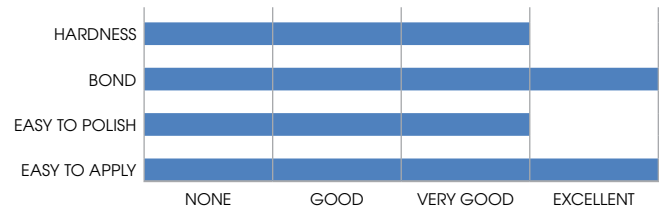
DECOpinfix is a state of the art product designed to fill pinholes and hairline cracks. DECOpinfix, is sprayed on the floor in between polishing steps and combines with the ground cement-dust to create a hard filler.



RECOMMENDED: for pinholes and micro cracks (smaller than 1mm). Applied during polishing process

DECOgrout

DECOgrout is a two component polymer modified cementitious repair material to repair small holes and cracks in the concrete surface. Like DECOfix it can be supplied in 5 different shades of grey to match the existing concrete.



RECOMMENDED: For all kinds of holes and cracks. Applied before polishing process

POLISH SYSTEMS

CREAM POLISH

Cream polish is suitable for industrial and commercial floors, which are in good condition. Only cleaning of the existing floor with DECOxt pad and light polishing is required.

After the surface preparation with DECOxt pad and resin 200 or 400 is completed, DECOLit or DECOsil should be applied.

DECOfinish can best be applied after polishing step with resin 800. Burnishing with DECOheat



Pad and a 1500 to 2500 rpm machine speeds up the reaction and maximizes the gloss.

SALT & PEPPER POLISH

This type of polishing exposes the sand at the concrete surface and requires a higher level of surface treatment. Usually the treatment starts with grinding with resin 50.

For larger floor areas planetary grinders are the most suitable and effective machines to perform the polishing steps.

DECOLit or DECOsil should be applied after polishing step with resin 200 and/ or 400.



A guard is usually applied after polishing step with resin 1500. The gloss requirement and porosity of the floor specifies the type of guard.

AGGREGATE POLISH

Aggregate Polish is the most elaborate, detailed and time consuming type of polishing. It results in the most durable type of floor as the larger aggregate is usually the hardest and most abrasive-resistant component of the concrete.

Prior to the polishing process the surface has to be grinded with heavy duty abrasives.

The same Deco products as with the Cream Polish and the Salt and Pepper Polish should be used. Like with the Cream Polish and the Salt and Pepper Polish the condition of the existing



floor will influence and impact the final look. A consistent architectural look and finish needs a flat floor of a good concrete quality.



POLISHED CONCRETE SOLUTIONS

Distributed in Indonesia by :

FLEXTOOL FLOOR SOLUTIONS - PT Mitra Citrajasa Konstruksi

Mitramas Building 7th Floor, J. Sunter Permai Raya Blok A1 No. 1-4
Sunter Permai, Jakarta 14350 - Indonesia

Phone : +62 21 – 640 8735 | Email : sales@flextoolfloors.com | www.flextoolfloors.com